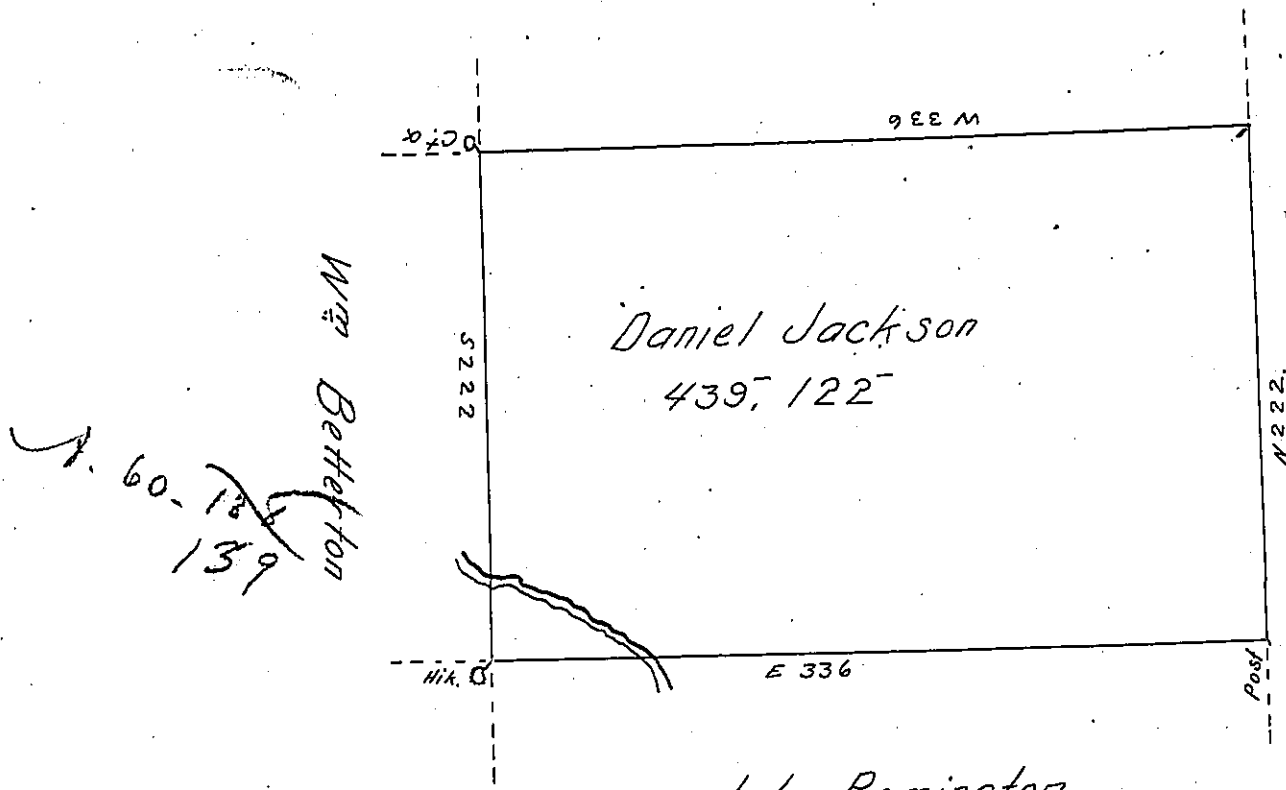


002-42-0

Matthew Bridge



John Remington

A. 47. 256

By Virtue of a Warr^t dated 3^d of September 1792 Surveyed the 10th day of November 1793. Unto Daniel Jackson the above described Tract of Four hundred and thirty nine Acres and 122 perches of Land and Allowance. Situated on a North branch of Bowmans Creek in Luzerne County

By W^m Montgomery D.S.

To Daniel Brodhead Esqr }
 Surv^r Gen^l of Pensylv^a }

N 10

IN TESTIMONY that the above is a copy of the original remaining on file in the Department of Internal Affairs of Pennsylvania, made conformably to an Act of Assembly approved the 16th day of February, 1833, I have hereunto set my Hand and caused the Seal of said Department to be affixed at Harrisburg, this twentieth day of April 1905.

Edward P. ...
 Secretary of Internal Affairs.